

COLLABORATIVE >

# HOME DESIGN

WHAT OUR CLIENTS ARE SAYING....



100K

DESIGN GROUP

Fashioning Form, Function & Finish



## MOSMAN RENOVATION

SUBSTANTIAL RENOVATION OF AN EXISTING RESIDENCE IN MOSMAN, 2021.

### TESTIMONIAL » C & R, MOSMAN VILLAGE, 2021

"We were so lucky to find Natalie!

We were based overseas and after a long process to obtain a DA, we needed to find a professional that could help us on many facets of our forever-home project: additional Architectural work, Documentation and Tendering, Interior Design and overall Project Management. Overlaying these tasks, we needed someone who we could 100% trust to be eyes and ears on the ground given we weren't living in Sydney. And on top of all this, COVID struck and with the borders closed we had no way of inspecting progress. Natalie ran the project like it was her own and collaborated with our Builder, Trades and other Designers to make our dream home a reality. During the process we encountered multiple challenges. Natalie somehow found solutions to overcome them. Multiple times she went above and beyond what I would expect to be her normal job to keep our project moving.

We love our beautiful home and we wouldn't be living in it now if it wasn't for Natalie. Highly recommended!"

### SCOPE OF WORK

- › Development Application for council approval for alterations and additions
- › Interior Architecture & Construction Documentation including:
  - Joinery Design, Selection & Documentation
  - Bathroom Design, Selection & Documentation
  - Kitchen Design, Selection & Documentation
  - Lighting & Electrical Design, Selection & Documentation
- › On-site construction advice and project management
- › Interior/exterior colour, material & finishes selection







## BONDI RENOVATION

SUBSTANTIAL RENOVATION OF AN EXISTING ATTACHED SEMI IN BONDI, 2021.

### TESTIMONIAL » AMANDA & JOHNNY HAMMOND

Natalie of Look Design Group impressed us from the start, with her vision and creativity in the design process as well as her commitment to the planning and DA process. She was strategic and diligent and her experience in dealing with the local Council really made a difference. Natalie supported us throughout the whole process. Changes were never an issue and she helped us to stick to our budget. Her recommendation of a builder was also brilliant and she worked collaboratively with him and the trades to ensure a smooth process which stuck to schedule. As first time renovators we always felt her support. We're so happy with our new home and very grateful for Natalie helping us bring it to life! We highly recommend working with Natalie and her team if you're looking to build or renovate.

### SCOPE OF WORK

- › Development Application for council approval for alterations and additions
- › Interior Design & Construction Documentation in collaboration with Melanie Tomlinson Design including:
  - Joinery Design, Selection & Documentation
  - Bathroom Design, Selection & Documentation
  - Kitchen Design, Selection & Documentation
  - Lighting & Electrical Design, Selection & Documentation
  - Interior & Exterior Materials & Finishes Selection & Documentation
- › On-site construction advice and project management







## MOSMAN RENOVATION

SUBSTANTIAL RENOVATION OF AN EXISTING RESIDENCE IN MOSMAN, 2020.

### TESTIMONIAL » CHRISTINA & OSCAR LUDWIGSON

"Natalie (Look Design Group) came highly recommended to us by friends. We have worked closely with her for over a year in all planning aspects for our renovation. Natalie assisted us with detailed drawings & documentation, helped us through the DA process with council & finally helped manage the tendering process to find the right builder. Given our inexperience in this field we relied heavily on her guidance & advice throughout the process. Natalie is professional, practical with her design ideas & always finds solutions when presented with challenges. Her work ethic is excellent & she is a very good communicator. Natalie is also deeply passionate about her work & the relationship she has with her clients. We have been extremely impressed every step of the way. We are very happy to recommend Natalie to anyone who needs a high quality architect."

### SCOPE OF WORK

- › Development Application for council approval for alterations and additions
- › Interior Architecture & Construction Documentation including:
  - Joinery Design, Selection & Documentation
  - Bathroom Design, Selection & Documentation
  - Kitchen Design, Selection & Documentation
  - Lighting & Electrical Design, Selection & Documentation
- › On-site construction advice and project management
- › Interior/exterior colour, material & finishes selection







## NAREMBURN RENOVATION

SUBSTANTIAL RENOVATION OF AN EXISTING RESIDENCE IN NAREMBURN, 2018.

### TESTIMONIAL » SALLY & MIKE SMALL 2018

"We used Look Design group for our home renovation in 2018. We had fairly clear ideas about what we wanted to achieve to suit our lifestyle and family requirements, Natalie worked with us seamlessly to create exactly what we wanted. A lot of design professionals want to have total control and will only do full projects from start to finish, with Look we were able to have a flexible more hands on approach whilst having the reassurance that all of the requirements for council were being met. The flexibility allowed us to save costs and made the process very enjoyable. Look made us feel thoroughly involved and we were rewarded by getting a home that we truly love."

### SCOPE OF WORK

- › Development Application for council approval for alterations and additions
- › Interior Architecture & Construction Documentation under the direction of Sally Small (home owner) including:
  - Joinery Design, Selection & Documentation
  - Bathroom Design, Selection & Documentation
  - Kitchen Design, Selection & Documentation
  - Lighting & Electrical Design, Selection & Documentation







## LANE COVE RESIDENCE

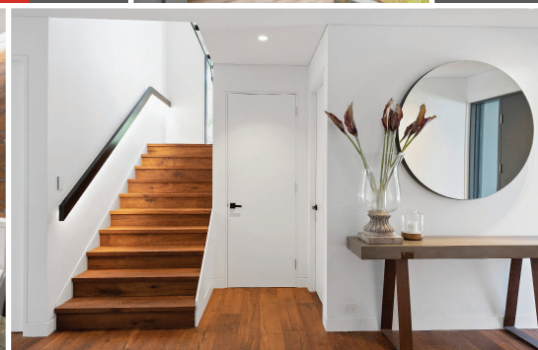
CONSTRUCTION OF A 3 STOREY DWELLING IN LANE COVE, 2018.

### TESTIMONIAL » STUART & LOUISE PIPER

"We sought interior design assistance for our new build Lane Cove House. While we had a great experience with the building designer, we elected to branch out for interior advise. We found Natalie to be very professional, engaging and genuinely interested in our project. She took us out of our comfort zone in a few areas and we really appreciate the outcome. Design fees were well and truly covered by trade discounts obtained on the purchase of furniture and fittings. Its a no brainer."

### SCOPE OF WORK

- › Interior Design & Construction Documentation including:
  - Bathroom Design, Selection & Documentation
  - Kitchen Design, Selection & Documentation
  - Fireplace & Joinery Design, Selection & Documentation
  - Furniture & Lighting, Selection & Procurement



look

DESIGN GROUP

Fashioning Form, Function & Finish





## MOSMAN RENOVATION

SUBSTANTIAL RENOVATION OF AN EXISTING RESIDENCE IN MOSMAN, 2017.

### TESTIMONIAL » CARL HARGRAVE 2017

"I engaged Natalie Andersen (Look Design) in March 2015 following a very poor experience with an Architect working on the design of my Renovation, which is an extensive rebuild of a two storey house in Balmoral with a spend of \$2m. Natalie works at a pace and with an energy that has delivered to every milestone that was agreed at the start of the project. She clearly shows a passion and ownership for the project in that she and her team spend so much time in the planning and design, that when obstacles emerge she will proactively get on the phone or in her car to personally get them resolved or negotiate the best outcome. This is so helpful to me as a client in that I am not experienced in the nuances or pitfalls of dealing with Councils, certifiers and particularly builders and you just know that Natalie will be onto the issue and will deliver the right outcome for the client. Ultimately, due to the length of a project of this size, you need to have a good relationship based on trust and mutual respect and knowing that your architect has you, the client's best interests at heart. By the time the build will be complete at the end of this year, I will have worked with Natalie for nearly 20 months. I am not the easiest person to work with, but Natalie's great sense of humour, professionalism and pragmatic approach has made the whole experience actually enjoyable bordering on "fun" and I would have no hesitation in recommending her."

### SCOPE OF WORK

- › Development Application for council approval for alterations and additions
- › Interior Architecture & Construction Documentation including:
  - Joinery Design, Selection & Documentation
  - Bathroom Design, Selection & Documentation
  - Kitchen Design, Selection & Documentation
  - Lighting & Electrical Design, Selection & Documentation
- › On-site construction advice and project management
- › Interior/exterior colour, material & finishes selection







## CLOVELLY RENOVATION

SUBSTANTIAL RENOVATION OF AN EXISTING RESIDENCE IN CLOVELLY, 2014.

### TESTIMONIAL » BRIAN FREEMAN 2014

"I contracted Look Design Group, to provide a unique design for our house renovation in Clovelly. The project was a full renovation with only 2 walls left on the original house. I briefed Natalie McDonald (Director) on the scope we had in mind, which was then turned into reality with her incredible vision. Natalie's attention to detail in planning and finishes has been a great asset in realising the best possible outcome for this project. I have found Natalie is willing to communicate not only with myself, but also the builders and trades onsite to ensure everyone is 'buying' into the success of this project. If you require a superior design and finish to your project, I would openly recommend the Look Design Group team."

### SCOPE OF WORK

- › Development Application for council approval for alterations and additions
- › Interior Architecture & Construction Documentation including:
  - Joinery Design, Selection & Documentation
  - Bathroom Design, Selection & Documentation
  - Kitchen Design, Selection & Documentation
  - Lighting & Electrical Design, Selection & Documentation
- › On-site construction advice and project management
- › Interior/exterior colour, material & finishes selection







## PADDINGTON RENOVATION

SUBSTANTIAL RENOVATION OF AN EXISTING TERRACE IN PADDINGTON, 2012.



### TESTIMONIAL » CON & VICKY AIFANTIS 2012

"Generous with her time and knowledge, Natalie is the first to harness a creative challenge – the extensive renovation of our tiny terrace. With clever use of space and design, Natalie managed to accommodate our requirements whilst still complying with council development constraints. Her enthusiasm for design is contagious. Her friendly and professional approach refreshing. Why wouldn't we recommend her services?"

### SCOPE OF WORK

- › Development Application for council approval for alterations and additions
- › Interior Architecture & Construction Documentation including:
  - Joinery Design, Selection & Documentation
  - Bathroom Design, Selection & Documentation
  - Kitchen Design, Selection & Documentation
  - Lighting & Electrical Design, Selection & Documentation
- › On-site construction advice and project management
- › Interior/exterior colour, material & finishes selection







## GORDON RENOVATION

SUBSTANTIAL RENOVATION OF AN EXISTING RESIDENCE IN GORDON, 2013.

### TESTIMONIAL » JACQUI & ANTONY GRIFFITHS 2013

"We had the pleasure of working with Natalie throughout the renovation of our home. Being our first renovation it was overwhelming knowing how much had to be done and how many decisions needed to be made. Prior to commencement Natalie reviewed our plans and recommended a number of simple changes which have made all the difference to the end product. Having Natalie draw plans for the bathrooms, laundry, kitchen, pantry, study, and BBQ area made the whole process less daunting. Natalie is a pro at design, colours and lighting which ensured the whole project worked together. It was fantastic having someone shopping with you and make suggestions that you might not have otherwise thought of. It was even better having someone send you emails with additional thoughts along the way. We thank her for her enormous patience, understanding and suggestions as we worked through the 7 months. We are thrilled with all recommendations and delighted with the end product."

### SCOPE OF WORK

- › Development Application for council approval for alterations and additions
- › Interior Architecture & Construction Documentation including:
  - Joinery Design, Selection & Documentation
  - Bathroom Design, Selection & Documentation
  - Kitchen Design, Selection & Documentation
  - Lighting & Electrical Design, Selection & Documentation
- › On-site construction advice and project management
- › Interior/exterior colour, material & finishes selection







## MOSMAN RESIDENCE

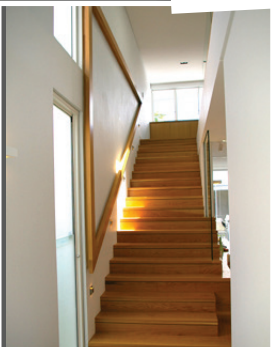
CONSTRUCTION OF A NEW RESIDENCE IN MOSMAN, 2009.

### TESTIMONIAL » SIMON NOBLE

"In 2009 I constructed my home for the first time, a daunting experience given the anticipated \$5 million dollar project cost. Faced with the dilemma of building my first home, with a Development Application about to expire and my builder chosen I had to act quickly. I couldn't afford to use the original architect as house prices had slumped and I was put off by the dollars they were quoting. The twist is that we had virtually no usable plans, had broken ground and needed to act quickly, as the builder required more detailed drawings for the house build to proceed. Natalie completed on time all the detailed drawings for the house. She consulted with my builder and I on a weekly basis with the end result being a house that my family and I love living in, a house that flows and has all the modern cons one could want. I found Natalie's knowledge of bespoke design, building and construction incredible. She saved me thousands, kept the build on budget and on time, creating a dwelling that is visually stunning."

### SCOPE OF WORK

- › Interior Architecture & Construction  
Documentation including:
  - Joinery Design, Selection & Documentation
  - Bathroom Design, Selection & Documentation
  - Kitchen Design, Selection & Documentation
  - Lighting & Electrical Design, Selection & Documentation
- › On-site construction advice and project management
- › Interior/exterior colour, material & finishes selection







## MOSMAN TOWNHOUSES

CONSTRUCTION OF TWO NEW RESIDENCES IN MOSMAN, 2010.

### TESTIMONIAL » MATT & DONNA BYRNE

"With construction already underway on a recent townhouse development, my builder suggested consulting Natalie to identify more effective ways to use space within some of the functional areas. Having already had design input from the architect I was originally hesitant to incur additional cost and unsure that there would be any real benefit. However Natalie's input dealt so effectively with the issues identified that I was happy to appoint her to take on a broader role in the design and specifications for the entire project. While this led to some significant changes the outcome was faultless – resulting in not only a more functional use of space but a contemporary finish that met our needs. Natalie's fresh approach, enthusiasm and genuine 'value add' on this project led me to utilise her services in undertaking a refurbishment of my own home, again with impressive results. I plan to use Natalie's services in my next project, involving her from the outset."

### SCOPE OF WORK

- › Interior Architecture & Construction Documentation including:
  - Joinery Design, Selection & Documentation
  - Bathroom Design, Selection & Documentation
  - Kitchen Design, Selection & Documentation
  - Lighting & Electrical Design, Selection & Documentation
- › On-site construction advice and project management
- › Interior/exterior colour, material & finishes selection
- › Property styling & presentation advice



look

DESIGN GROUP

Fashioning Form, Function & Finish